

**DISTRICT OF PORT HARDY
AGENDA
COMMITTEE-OF-THE-WHOLE COUNCIL MEETING
6:00 pm TUESDAY NOVEMBER 13, 2012
Council Chambers - Municipal Hall**

A. CALL TO ORDER

Time:

B. APPROVAL OF AGENDA

Motion required

1.

2.

C. DELEGATION - Dawn Moorhead and David Lang, Grassroots Garden Society

Page

1 Directors Report to 2012 Grassroots Garden Society Annual General Meeting

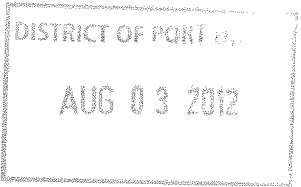
2-4 2011 Financial Statements

5-6 Café: construction sample budget / photo

7-8 Sunshine Coast Botanical Center, Sechelt, BC

9 Information on Iris Griffith Center, Madeira Park BC

**D. Council rises, recommendations taken to Regular Meeting of Council, 7:00 pm
November 13, 2012.**



Grassroots Garden Society

Directors' Report to 2012 AGM

1. Recently received CFAI/VIHA grant (\$8,500) to expand school program. 14 classroom visits in May/June. Grades K-10, including NISS students. Program resumes in the fall.
2. Sustainability of the learning centre = food production facility, community commercial kitchen, creation of two permanent paid positions.

Example of colleague's project down island: commercial kitchen, caretaker apartment upstairs, dining/meeting area, wrap around covered porch, off-the-grid heating. Similar to building envisioned at Grassroots using alternative energy and composting toilets (see also Iris Griffith Centre, entirely off the grid)

Need site owned by supportive local government or First Nations or school district willing to partner in obtaining grant.

3. Since last AGM: constructed tool shed, two greenhouses, cedar school room, and cedar beds within deer fencing; deer fenced 1/4 acre; began orchard work; received organic certification; completed Handbook Unit 1.
4. Next year will be first year of serious food production. We have finally sourced the soil amendments needed to "get it right". They have been ordered and will be delivered next week and applied to the deer-fenced area before winter.

8:17 AM

15/02/12

Accrual Basis

Grassroots Garden Society
Statement of Financial Income and Expense
January through December 2011

	<u>TOTAL</u>
Ordinary Income/Expense	
Income	
43400 - Direct Public Support	
4340 - Sale of firewood	450.00
43420 - Donations for seeds and baked g	5.00
43450 - Individ, Business Contributions	259.38
46490 - Plant Sales	615.13
Total 43400 - Direct Public Support	1,329.51
43441 - Sale of produce	24.75
43443 - Reel North Island Film Festival	
43444 - Ticket Sales	519.50
43445 - Catering	104.00
Total 43443 - Reel North Island Film Festival	623.50
45000 - Investments	
45030 - Interest-Savings, Short-term CD	34.60
Total 45000 - Investments	34.60
47200 - Program Income	
47201 - Garlic sales	158.00
47230 - Membership Dues	85.00
47231 - Initiation Fee	80.00
Total 47200 - Program Income	323.00
Total Income	2,335.36
Gross Profit	2,335.36
Expense	
60900 - Business Expenses	
60920 - Business Registration Fees	75.00
Total 60900 - Business Expenses	75.00
62100 - Contract Services	
62150 - Outside Contract Services	84.45
Total 62100 - Contract Services	84.45
62700 - Reel North Island FF	
627003 - Catering Expenses	260.72
62701 - Traffic	30.66
62702 - Movie Rental	205.35
62703 - Miscellaneous, Advertising	15.67
62704 - Custodian call out	50.00
62705 - Insurance charge	5.00
Total 62700 - Reel North Island FF	567.40
62800 - Facilities and Equipment	
62801 - Tools, small	900.97
62802 - Office equipment	164.06
62820 - Grassroots Garden	
62821 - Inputs	793.79
62822 - Grassroots Garden equipment	139.90
62823 - Children's Garden	1,042.27
62820 - Grassroots Garden - Other	69.67
Total 62820 - Grassroots Garden	2,045.63
62840 - Equip Rental and Maintenance	23.52
62800 - Facilities and Equipment - Other	646.49
Total 62800 - Facilities and Equipment	3,780.67

8:17 AM
15/02/12
Accrual Basis

Grassroots Garden Society
Statement of Financial Income and Expense
January through December 2011

	<u>TOTAL</u>
65000 · Operations	
65010 · Books, Subscriptions, Reference	199.92
65020 · Postage, Mailing Service	339.56
65030 · Printing and Copying	687.03
65040 · Supplies	4,242.41
65050 · Telephone, Telecommunications	280.00
65060 · Bank Fees	102.29
Total 65000 · Operations	<u>5,851.21</u>
65100 · Other Types of Expenses	
65101 · Meetings	901.58
65109 · Fall Fair 2011	187.21
65110 · Travel	1,210.55
65111 · Educational materials	218.46
65120 · Insurance - Liability, D and O	74.00
65130 · Soil testing	207.20
65150 · Memberships and Dues	664.19
65160 · Other Costs	478.26
65160 · Summer Student Jobs	
65182 · Miscellaneous	-0.30
Total 65180 · Summer Student Jobs	<u>-0.30</u>
Total 65100 · Other Types of Expenses	3,941.15
65190 · Website & Domain name one year	176.07
66900 · Reconciliation Discrepancies	-0.60
Total Expense	<u>14,475.35</u>
Net Ordinary Income	<u>-12,139.99</u>
Net Income	<u><u>-12,139.99</u></u>

A. M. King 28/02/12

A. M. King March 28, 2012

8:13 AM
15/02/12
Accrual Basis

Grassroots Garden Society
Statement of Financial Position
As of 31 December 2011

	<u>31 Dec 11</u>
ASSETS	
Current Assets	
Chequing/Savings	
CIBC Checking	301.09
13000 - Petty Cash	440.80
23 - savings account (GGS)	345.81
3 - Petty Cash - Children's Garden	278.03
Total Chequing/Savings	<u>1,365.73</u>
Total Current Assets	1,365.73
Fixed Assets	
15000 - Furniture and Equipment	267.64
15500 - Facility Construction-clubhouse	
15600 - Tool shed	778.31
15500 - Facility Construction-clubhouse - Other	6,335.19
Total 15500 - Facility Construction-clubhouse	<u>7,113.50</u>
Total Fixed Assets	<u>7,381.14</u>
TOTAL ASSETS	<u><u>8,746.87</u></u>
LIABILITIES & EQUITY	
Liabilities	
Current Liabilities	
Accounts Payable	
20000 - Accounts Payable	55.00
Total Accounts Payable	55.00
Credit Cards	
1 - VISA	95.47
Total Credit Cards	<u>95.47</u>
Total Current Liabilities	<u>150.47</u>
Total Liabilities	150.47
Equity	
32000 - Unrestricted Net Assets	20,736.39
Net Income	-12,139.99
Total Equity	<u>8,596.40</u>
TOTAL LIABILITIES & EQUITY	<u><u>8,746.87</u></u>

21 May 28/03/12

John March 28, 2012

Sample Budget for Café Construction 30 x 50

Foundation	20,000
Frame	20,000
Roof	20,000
Services (Electric, Plumbing, Heating)	20,000
Window/Door/Trim	10,000
Commercial Kitchen	20,000
Government Regs	<u>30,000</u>
SubTotal	140,000
1-2 Bdrm Living Space 2 nd floor	20,000
Labour	20,000
Alternative Heating (Solar, Geotherm)	20,000
Miscellaneous	<u>20,000</u>
Total Cost	220,000



WEEKEND EXTRA

Sunshine Coast Botanical Gardener expected to make some green

BY RANDY SHORE
VANCOUVER SUN

SUNSHINE COAST

Intensive fundraising and a couple of timely government grants have helped lay the foundation for a howpiece botanical garden and major tourist attraction on B.C.'s Sunshine Coast.

Although much of the 40-acre former tree farm is marshland, rough meadow, dusty roadbeds and an active construction site, the Sunshine Coast Botanical Garden is already a focus for the energies of nearby Sechelt. Preschoolers come up weekly to learn about bugs, dirt and, of course, plants. Seniors from the Totem Lodge and other care homes are growing beans, tomatoes and chives in wheelchair accessible planter boxes.

The membership of the Sunshine Coast Botanical Garden Society has doubled to 700 since the purchase of the property two years ago. Not bad, since the entire population of the Sunshine Coast is barely 28,000 souls.

Many here believe that the gardens, still very much a work in progress, will be a significant new tourist draw and economic generator. Botanical garden

B.C.'s established botanical gardens are a significant draw for tourists from home and abroad. Vancouver Island's Butchart Gardens attracts over one million visitors a year as part of a "garden loop" that includes Chilliwack's Minter Gardens, Vancouver's VanDusen Botanical Garden and five gardens at the University of British Columbia. Vancouver's Stanley Park draws an estimated eight million visitors a year.

"Garden tourism is huge," said society president Mary Blockberger. "There are a lot of people whose idea of a great vacation is to hop in the car and drive from garden to garden to garden to garden."

"This will create a nice circle for people coming from Vancouver, up the coast and back over to Vancouver Island and even down to Washington state," she said.

"We have members with direct ties to the garden tourism industry up and down the coast, in the United States and in Europe," said society vice-president Paddy Wales. "It's an amazing business."

The society has already begun organizing tours hosted by a storyteller from the Sechelt First Nation, tapping into growing demand for aboriginal tourism.

"When that tour was over, people didn't even want to speak they were so touched by it," Wales said. "Every plant here has a story."

Sechelt Mayor Darren Inkster is optimistic that spinoff dollars will soon begin to flow from the project, as a

tourist attraction and a conference space in a stunning natural setting.

"They will have something for everybody on that property," he said. "We don't have a lot of attractions aside from the natural environment on the Sunshine Coast."

The society projects that more than 8,000 people will visit in the first year of operations and grow into the tens of thousands as the gardens and infrastructure fill in.

Overnight visitors to the Sunshine Coast typically spend between \$122 a day for British Columbians and \$302 for visitors from the United States, according to Tourism B.C. figures.

"We've been talking about trying to expand the shoulder season to get visitors coming year round," said Inkster. "We think this creates that opportunity."

Today workers are sealing the concrete foundation of a half-built skeleton that will be a flashy new multi-purpose building with a ballroom and commercial kitchen. Wales says

a welcome head start for the fledgling gardens, with a number of indigenous and exotic varieties dotting the landscape or waiting patiently in long-forgotten rows. A scant breeze whispers in the branches that overhang a pond plucked straight from a Claude Monet canvas.

A strip of flat ground along the Mason Road fenceline will be set aside for food gardens, a resource that a wily concession contractor could employ to offer sustainable food service to hungry visitors. Such are the possibilities of raw land and a society membership that, as Blockberger puts it, "has one of everything, from landscape architects and lawyers to realtors, carpenters and cooks."

The membership raised the \$200,000 down payment on the \$870,000 parcel from annual plant sales and galas, then succeeded in coaxing \$717,077 from the federal government's infrastructure program and \$370,295 from the Island Coastal Economic Trust. The District of Sechelt (\$15,000) and local businesses (in-kind donations of \$160,000) have also ponied up for the project. Blockberger says the membership is committed to pay off the \$670,000 mortgage in five years and based on their track record there is little doubt they will do it.

"That's our intention," she said. "We know it's not going to happen overnight, but all of the goals we've set we always think we're never going to do that."

"I was sitting at a meeting where we had qualified for grants to move ahead, but we needed another \$65,000 in donations by Thursday," Blockberger recalled. "And I said, 'What happens when we don't do that?'"

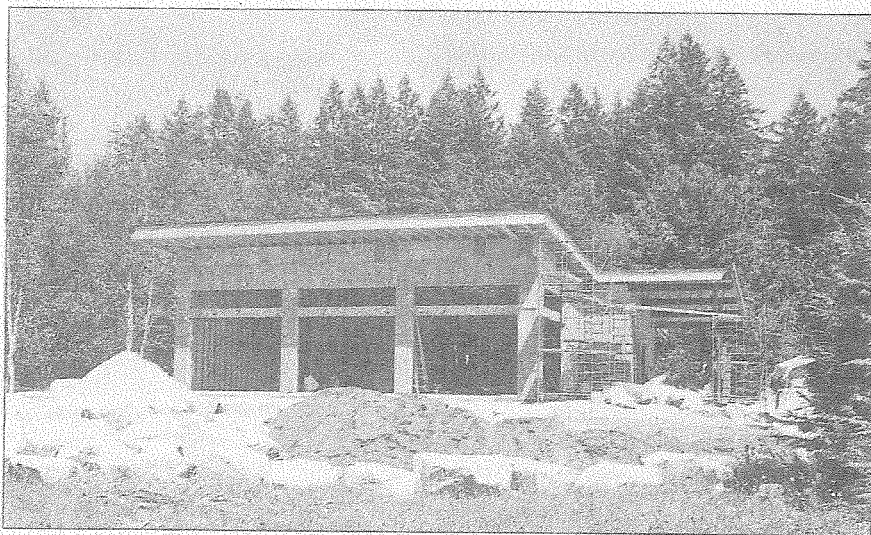
"On Thursday we had \$72,000 in donations," she said. That community effort convinced government agencies that the project was a go, paving the way for \$1.4 million in grants.

As the infrastructure is completed, the garden and its facilities are projected to gross \$400,000 to \$600,000 annually, but the economic spinoffs for the community are expected to be much greater.

"We really encourage non-profits to make sure they have their own revenue streams and not to rely on government, and this project is well-positioned to do that," said Barrie Wilbee, of Sunshine Coast Community Futures, a federally funded economic development agency.

"We see real opportunities for adjunct businesses to create jobs around the gardens," said Wilbee. "We are transitioning from forestry and fishing and looking for value-added low-impact industry."

rshore@vancouver.sun.com
Read The Green Man Blog at
vancouver.sun.com/randysshore



Construction continues on the Sunshine Coast Botanical Garden in Sechelt.

the facility already has a booking for December.

"We see this as the place everyone will want to hold a wedding," said Blockberger. The West Coast-style

ballroom is oriented so that towering windows open onto a green meadow that rolls toward Crown land.

Mature trees left over from the site's former life as a street tree nursery are

IRIS GRIFFITH CENTRE

[entirely off-the-grid, financed with help from grants available to North Island.
Community Futures & local government/First Nations/school district partner required]

Built in 2005, the 2,500 square foot Iris Griffith Interpretive Centre was designed by John Dafoe in collaboration with the Lagoon Society Building Committee and West Coast Log Homes.

We're open to the public each week from Tuesday to Sunday, 10 am to 4 pm throughout the winter, and everyday throughout the spring, summer and fall.

15386 Sunshine Coast Highway
Madeira Park, British Columbia
V0N 2H1 Canada
Phone: 604-883-9201

Iris Griffith Field Studies and Interpretive Centre

An Educational Resource

The Iris Griffith Interpretive Centre serves as the base for many exciting community and school programs. These include an innovative Nature School Program for elementary and secondary school students, along with interpretive programs, Workshops, Lectures and Slideshows and tours for the general community, and adult education courses for university and college students, professionals, hobbyists, and amateur naturalists. A wetland restoration project is helping to create valuable habitat for wildlife and is giving community members a hands-on opportunity to work to improve the environment.

A Model Green Building

Thanks to a generous grant from the Real Estate Foundation of BC and Vancity, the Iris Griffith Centre is currently being retrofitted with green building elements including a water catchment system, solar electric power, green roof, and a solar water heating system to provide hot water both for in-floor radiant heating and for building hot water supplies. In conjunction with the green building retrofits, and with financial support from the Environment Canada EcoAction Program, we are also launching a new education program to inform local residents about energy conservation, alternative technologies, and sustainable living choices.

Displays and Exhibits

The Interpretive Centre houses a collection of Displays and Exhibits characterizing human interaction with the natural environment from the mountains down to the sea. It serves as a base for many exciting community and school programs, including children's activities, adult education courses and workshops, guided nature walks and field trips, slide shows and lectures, public forums, and an innovative Nature School Program for children.